



GRAYHILL

SERIES 58

Single Deck, Antistatic

LOCK FEATURES

- Minimum Space Behind Panel
- 15,000 Vdc Static Protection
- 5 Tumbler-Plate Security
- In-Panel Key Recoding

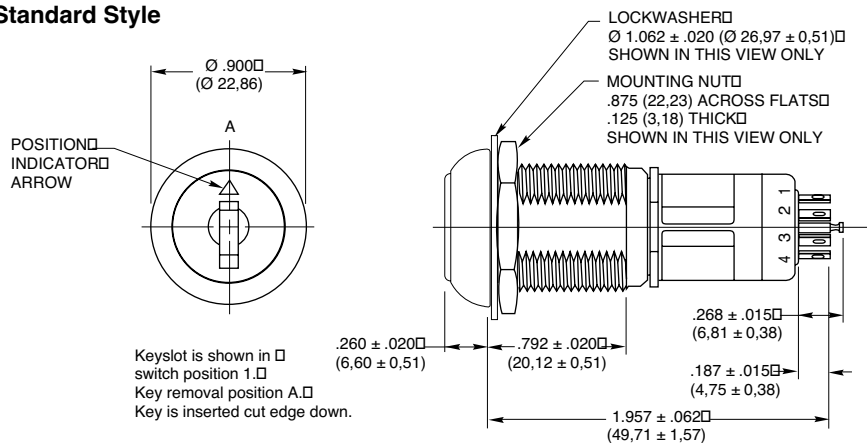
SWITCH FEATURES

- Economical
- Solder Lug or PC Mount
- 36°, 45°, 60°, or 90° Throws
- 1 or 2 Poles Per Switch
- Up to 10 Positions for 1 Pole
- 200 mA for 25,000 Cycles



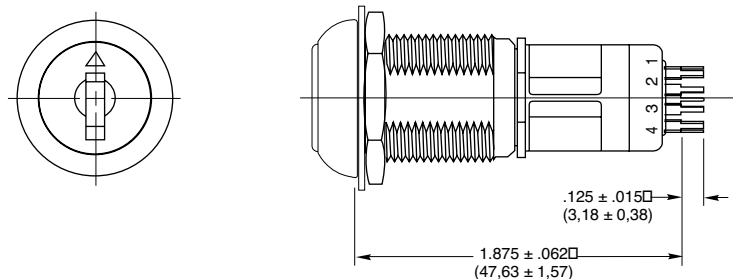
DIMENSIONS in inches (and millimeters)

Standard Style



PC Mount Style

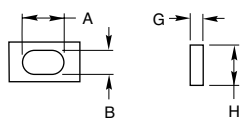
Dimensions not shown are □
the same as above.



Grayhill part number and date code marked on label. Customer part number marked on request.

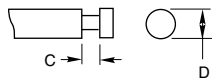
TERMINAL DETAIL

Solder Lug



A = .064 ± .005 (1,63 ± 0,13)
B = .032 ± .004 (0,81 ± 0,10)

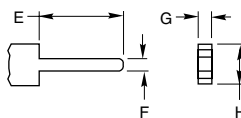
Solder Lug Common



C = .050 ± .010 (1,27 ± 0,25)
D = .062 Ø ± .002 (1,57 Ø ± 0,05)

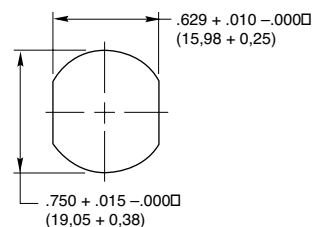
G = .020 ± .003 (0,51 ± 0,08)
H = .062 ± .004 (1,57 ± 0,10)

PC Mount



E = .125 ± .015 (3,18 ± 0,38)
F = .020 ± .003 (0,51 ± 0,08)

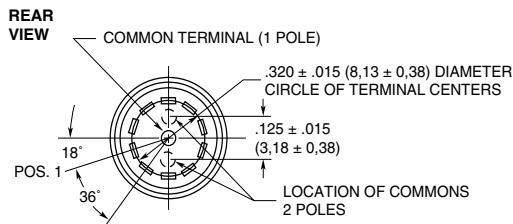
RECOMMENDED PANEL CUT



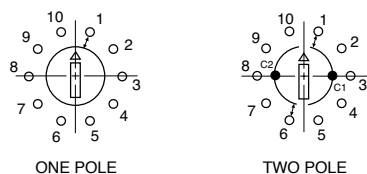


CIRCUITRY

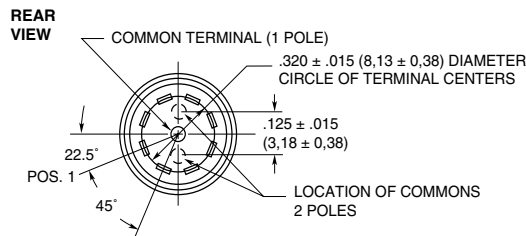
36° Angle of Throw



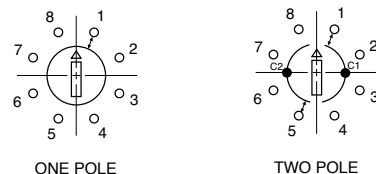
VIED FROM FRONT END; SHOWN IN POSITION 1.



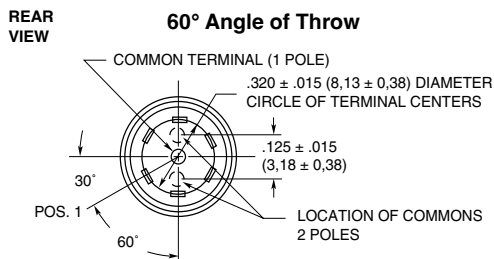
45° Angle of Throw



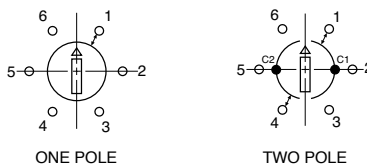
VIED FROM FRONT END; SHOWN IN POSITION 1.



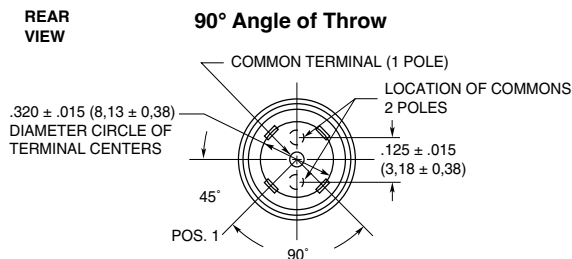
60° Angle of Throw



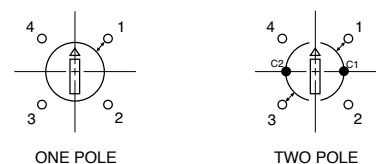
VIED FROM FRONT END; SHOWN IN POSITION 1.



90° Angle of Throw



VIED FROM FRONT END; SHOWN IN POSITION 1.



LOCK SPECIFICATIONS

General Characteristics

Mounting: By bushing, nut and lockwasher

Keying: All locks keyed alike except by special order

Orientation of Keylock Switch: Lock flats on both sides with key upright (cut side down) in position 1.

Key Removals:

36° Throw Switch	At every position or At 0° & 180°
45° Throw Switch	At every position or At 0°, 90°, 180°, 270°
60° Throw Switch	At every position or At 0°, 180°
90° Throw Switch	At every position or At 0°, 180°

Optional pulls Contact Grayhill

Materials & Finishes

Keys: Brass; 2 supplied

Lock Barrel & Plug: Zinc, clear chromate

Lockwasher: Steel, tin zinc plated

Mounting Nut: Steel, nickel-plated

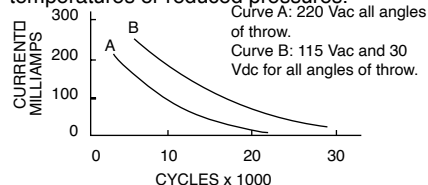
Tumbler Plates: Brass

SWITCH SPECIFICATIONS

Electrical Characteristics

Chart is shown for non-shorting contacts and resistive load and for the life limiting criteria indicated below. The data for the curve was measured at sea level, 25°C and 68% relative humidity. Contact Grayhill for more information

if any of the following is true: life limiting criteria are more critical than those listed; more cycles of operation are required; a larger make and break current is required; the operating environment includes elevated temperatures or reduced pressures.





SWITCH SPECIFICATIONS *Continued*

Contact Resistance: Initially: less than 10 mΩ End of life: less than 50 mΩ Insulation Resistance: (Between mutually insulated parts) Initially: 50,000 MΩ Minimum: 10,000 MΩ Breakdown Voltage: (Between mutually insulated parts) more than 600 Vac Life Expectancy: Per chart; cycle is 1 rotation thru all active positions plus a full return. Carry Current: 6A; maximum temperature rise 20°C	Anti-Static Voltage: Anti-static types tested to withstand 15,000 Vdc Mechanical Characteristics Switching Mode: Shorting (make before break) or non-shorting (break before make) as limited by the Choices chart Type of Contact: Wiping Number of Terminals: All switches are provided with the full circle of terminals regardless of the number of active positions Stop Strength: 1.70 Nm maximum (15.0 in-lbs) Switching Torque: 8 to 16 in-ozs	Materials and Finishes Switch Base: Thermoset plastic Switch Housing: Nylon Detent Rotor: Nylon Detent Balls: Steel, nickel-plated Detent Springs, and Contact Springs: Stainless steel Common Ring: Brass, gold plate over silver plate Terminals: Brass, gold over silver and nickel plate Rotor Contact: Precious metal, gold alloy
---	--	---

CHOICES AND LIMITATIONS

Lock Style and Description*	Switch Style and Description	Angle of Throw	No. Of Decks	Poles/Deck	Positions Per Pole**	Shorting or Non-Shrtg.
Series 58J Switches						
J4: Standard—Key pulls at Position 1 and at 90 Degree Increments	A = Standard, Solder Lugs P = Standard, PC Mount	45°	1	1 2	02 to 08 02 to 04	N or S N or S
J8: Standard—Key Pulls at Each Position	A = Standard, Solder Lugs P = Standard, PC Mount	36°	1	1 2	02 to 10 02 to 05	N or S N or S
		45°	1	1 2	02 to 08 02 to 04	N or S N or S
		90°	1	1 2	02 to 04 02	N N
J9: Standard—Key Pulls at Position 1 and at 180 Degrees	A = Standard, Solder Lugs P = Standard, PC Mount	36°	1	1 2	02 to 10 02 to 05	N or S N or S
		45°	1	1 2	02 to 08 02 to 04	N or S N or S
		60°	1	1 2	02 to 06 02 to 03	N N
		90°	1	1 2	02 to 04 02	N N

*Standard Keylock has anti-static protection. All keylock versions available without anti-static protection, with a reduced overall body length. Contact Grayhill for more information.

**For single pole switches with maximum positions, specify continuous rotation or fixed stop when ordering.

ORDERING INFORMATION

	Series Lock Style: per Choices Chart J4, J8, J9 Switch Style: per Choices Chart A or P Angle of Throw: 36, 45, 60 or 90 (per Choices chart) Number of Decks: 01 Poles per Deck: = 1 or 2 (per Choices chart) Positions per Pole: 02 thru 10 (per Choices chart) Type of Contacts: (per Choices chart) N = Non-shorting S = Shorting Stop Arrangement Suffix: (needed only for 1-pole switches with maximum positions) F = Fixed stop between last and first positions *Leave blank for continuous rotation
58J8A36-01-1-10N-F	

Available from your local Grayhill Distributor.

For prices and discounts, contact a local Sales Office, an authorized local Distributor or Grayhill.